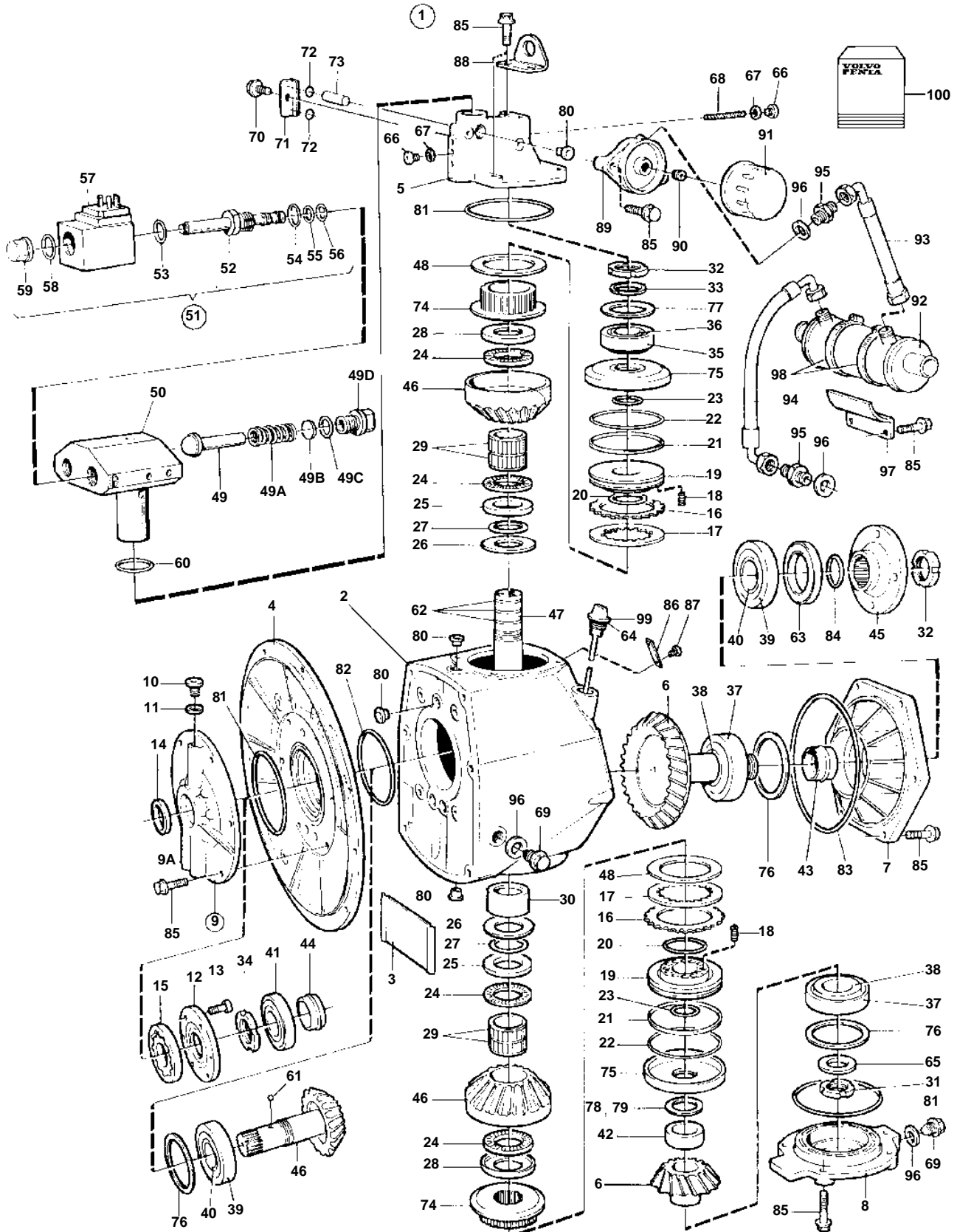


HS1E-A



16901

## HS1E-A

REF	PART NO.	QTY	DESCRIPTION	NOTES
1	3857090	1	Reversing gear	RATIO 1.96:1
2	872500	1	• Gear housing	
3	872574	1	• Shield	
4	872501	1	• Cover	
5	872725	1	• Valve housing	
6	872510	1	• Drive gear set	
7	872505	1	• Bearing housing	
8	872506	1	• Bearing housing	
9	3851512	1	• Oil pump	
9A		1	• • Oil pump housing	
10	945065	3	• • Plug	
11	969011	3	• • Gasket	
12		1	• • Cover	
13	942001	6	• • Screw	
14	6842273	1	• • Sealing ring	Included in gasket kit.
15		1	• • Pump element	
16		14	• Disc	Included in disc kit.
17		16	• Disc	Included in disc kit.
18	872580	26	• Spring	
19	872518	2	• Piston	
20	977891	2	• O-ring	Included in gasket kit.. Included in piston ring kit.
21		2	• Piston ring	Included in piston ring kit.
22		2	• O-ring	Included in piston ring kit.
23	872522	2	• Lock ring	
24	184175	4	• Needle bearing	
25	184239	2	• Washer	
26	872581	2	• Spring washer	
27	956000	2	• O-ring	Included in gasket kit.
28	872570	2	• Thrust washer	
29	184798	4	• Needle bearing	
30	872587	1	• Roller bearing	
31	969072	1	• Round nut	Included in gasket kit.
32	969073	2	• Round nut	Included in gasket kit.
33	872520	1	• Washer	
34	969074	1	• Round nut	Included in gasket kit.
35	181304	1	• Cup	
36	181303	1	• Roller bearing	
37	183403	2	• Cup	
38	183649	2	• Roller bearing	
39	181036	2	• Cup	
40	184797	2	• Roller bearing	
41	183232	1	• Roller bearing	
42	872521	1	• Spacer sleeve	
43	872568	1	• Pretensioning sleeve	
44	872569	1	• Pretensioning sleeve	
45	872523	1	• Companion flange	
46	872507	1	• Drive gear set	
47	872515	1	• Shaft	
48		2	• Washer	Included in disc kit.
49	873518	1	• Valve	
49A	872585	1	• Spring	
49B	978917	X	• Shim	TH = 0.50mm
49C	925058	1	• O-ring	
49D	872525	1	• Housing	
50	3857073	1	• Valve housing	
51	3857083	2	• Solenoid valve	
52		2	• • Valve	
53		2	• • O-ring	Included in gasket kit.
54		2	• • O-ring	Included in gasket kit.
55		2	• • O-ring	Included in gasket kit.
56		2	• • O-ring	Included in gasket kit.

## HS1E-A

REF	PART NO.	QTY	DESCRIPTION	NOTES
57		2	• • Magnet	
58		2	• • O-ring	Included in gasket kit.
59		2	• • Nut	
60	955996	1	• O-ring	
61	1521240	1	• Ball	
62		3	• Piston ring	Included in piston ring kit.
63	872701	1	• Sealing ring	Included in gasket kit.
64	925058	1	• O-ring	
65	978906	1	• Support washer	
66	977917	3	• Plug	
67	947620	3	• Gasket	Included in gasket kit.
68	872577	1	• Oil pump screen	
69	1381498	2	• Plug	
70	967949	1	• Screw	(965175)
71	872529	1	• Cover	
72	955983	2	• O-ring	Included in gasket kit.
73	3857085	1	• Lock pin	
74	872608	2	• Hub	
75	872611	2	• Cylinder	
76	977913	X	• Shim	TH = 0,10mm
	977914	X	• Shim	TH = 0.15mm
	977915	X	• Shim	TH=0.35mm
77	977910	X	• Shim	TH = 0,10mm
	977911	X	• Shim	TH = 0.15mm
	977912	X	• Shim	TH=0.35mm
78	978912	X	• Shim	TH = 0,30mm
		X	• Shim	TH=0.35mm
	978913	X	• Shim	TH=0,40mm
	978914	X	• Shim	TH = 0,45mm
	978915	X	• Shim	TH = 0,50mm
	978916	X	• Shim	TH = 0,55mm
79	978917	X	• Shim	TH = 0,50mm
80	422413	11	• Sealing ring	Included in gasket kit.
81	925263	3	• O-ring	Included in gasket kit.
82	925260	1	• O-ring	Included in gasket kit.
83	948866	1	• O-ring	Included in gasket kit.
84	949659	1	• O-ring	(925065). Included in gasket kit.
85	947760	28	• Flange screw	
86		1	• Sign	
87	950885	2	• Rivet	
88		1	• Lifting eye	
89	872605	1	• Bracket	
90	840274	1	• Nipple	
91	834337	1	• Oil filter	
92	872626	1	• Oil cooler	
93	872637	1	• Hydraulic hose	
94	872638	1	• Hydraulic hose	
95	192639	2	• Nipple	
96	947624	4	• Gasket	Included in gasket kit.
97	872615	1	• Bracket	
98	961674	2	• Clamp	
99	3858156	1	• Dipstick	
100	876588	1	Gasket kit	SEE GROUP 99
	876591	1	Disc kit	SEE GROUP 99
	876589	1	Piston ring kit	SEE GROUP 99
	3857086	1	Kit	